

**Mahatma Education Society's
Pillai HOC College of Arts, Science and Commerce,
Rasayani**

CRITERION I: 1.4.2

**FEEDBACK ANALYSIS REPORT
(A.Y. 2020-21)**



Latanu

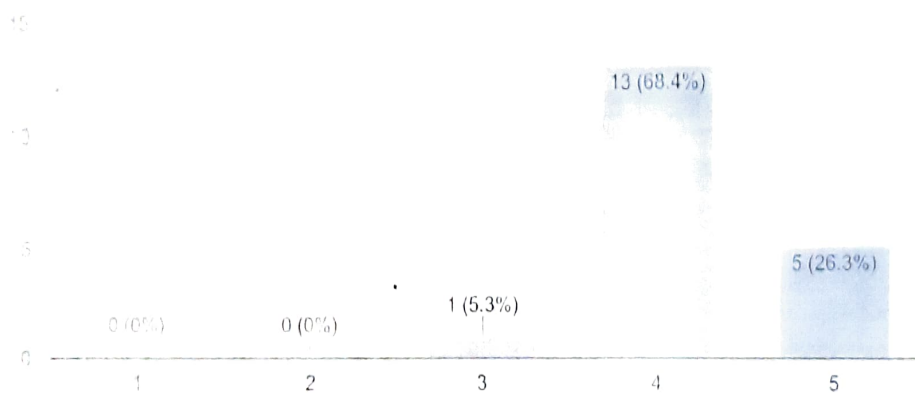
IQAC FEEDBACK FORM FOR STUDENTS

19 responses

2. Extent of syllabi covered

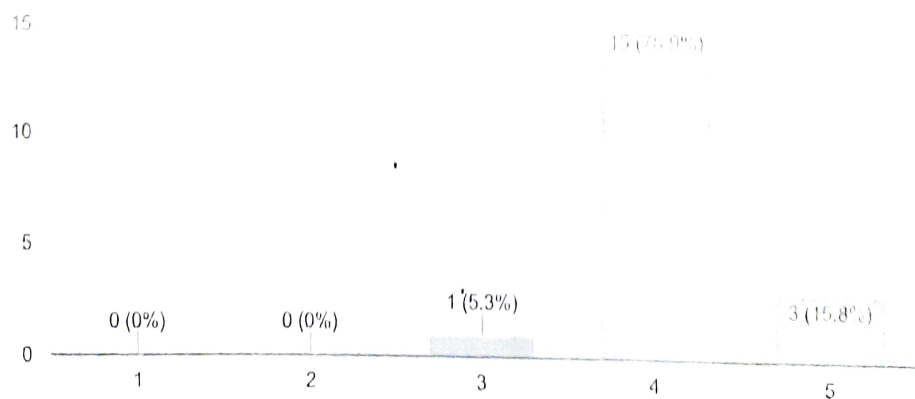
1. Curriculum and Syllabi of the Courses

13 responses



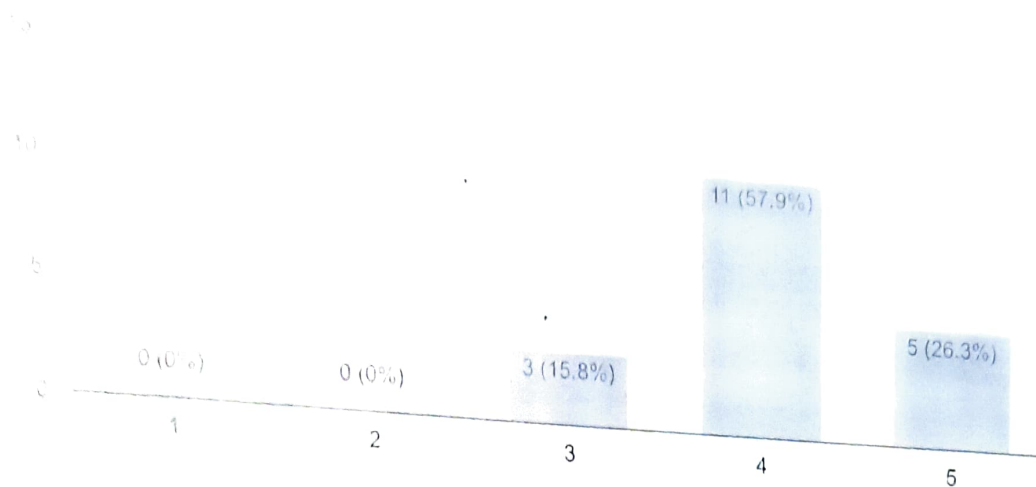
2. Extent of syllabi covered in the Class

19 responses



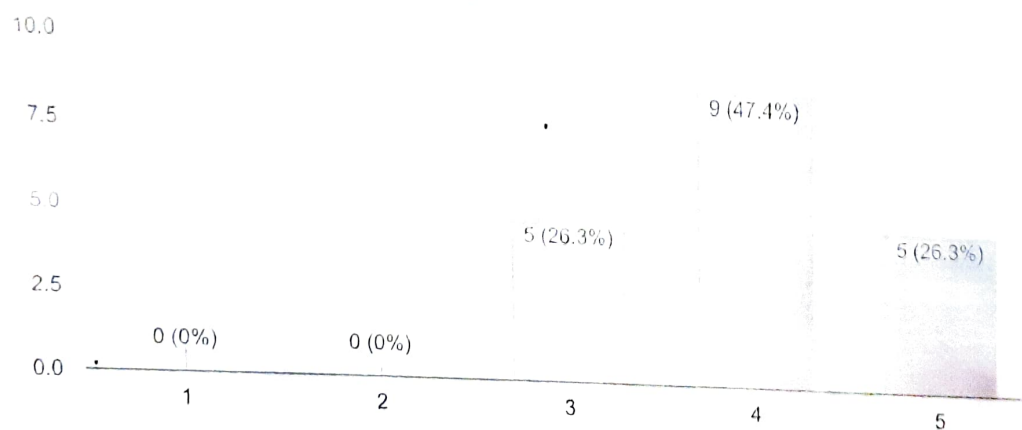
3. Course delivery by faculty members in the class

19 responses



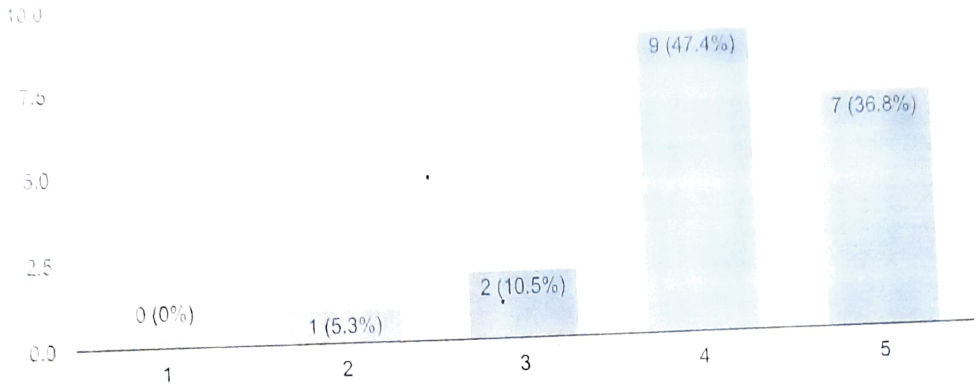
4. Usage of teaching aids and ICT in the class by faculty to facilitate teaching

19 responses



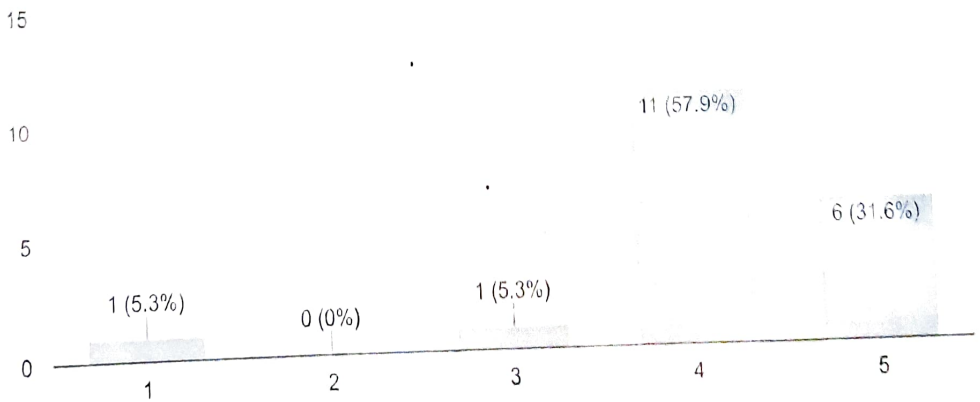
5. Fairness in the assessment processes (CAT, FAT, Quiz, Assignments, etc.)

19 responses



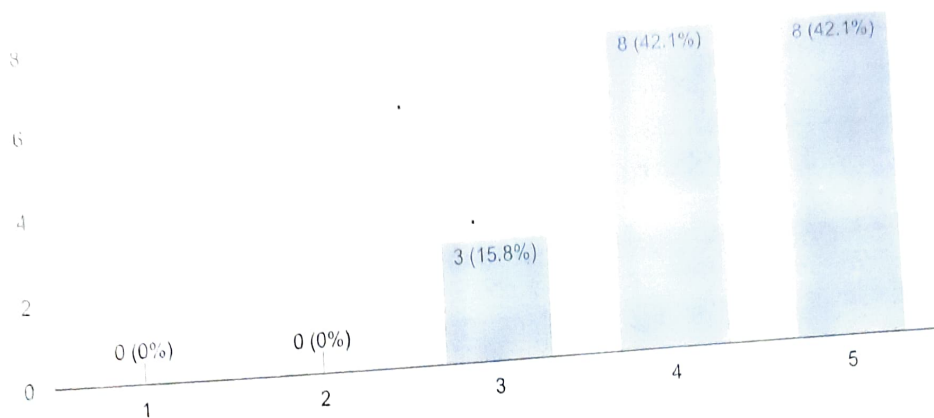
6. Timely announcement of examination results

19 responses



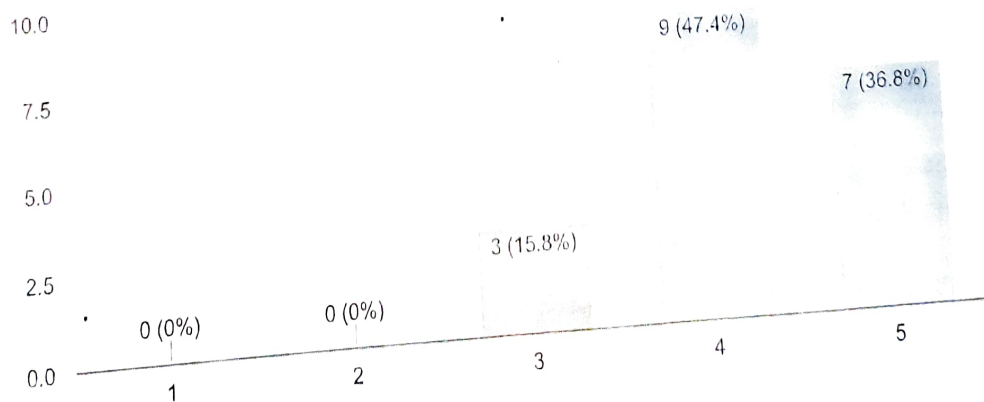
7. Opportunities in the School/ University for Research Activities

19 responses



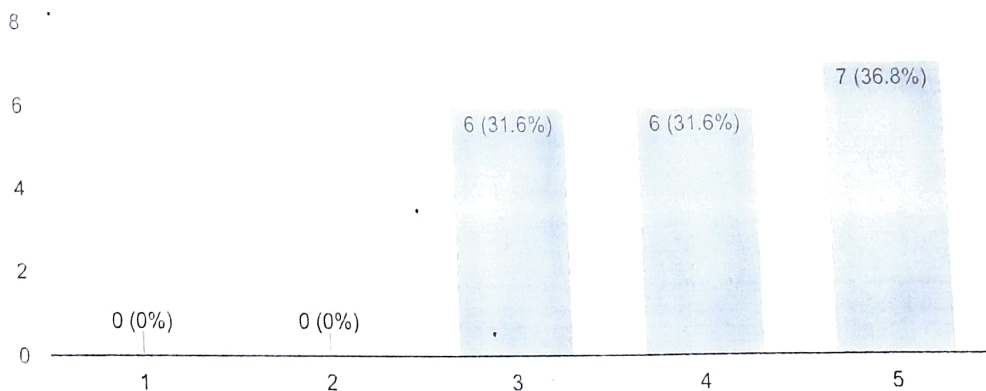
8. Opportunity for students to participate in internship, student exchange, field visit

19 responses



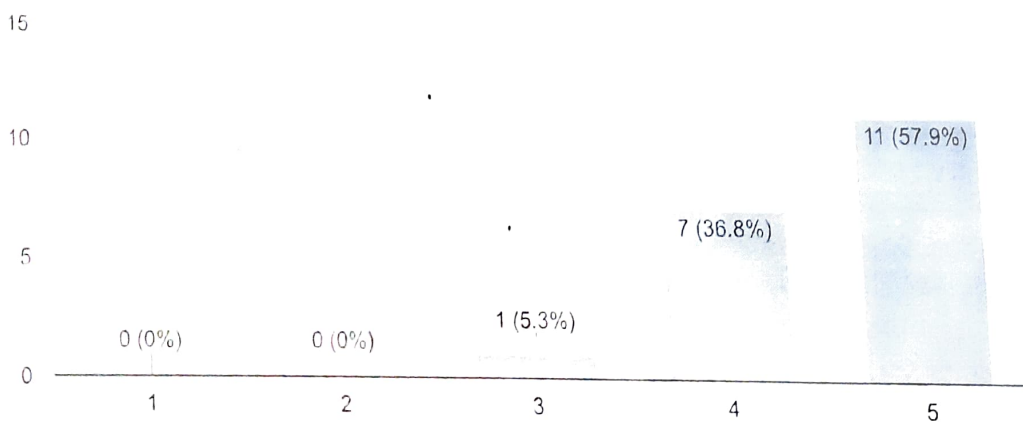
9. Opportunities for out of class room learning (guest lectures, seminars, workshop, value added programmes, conferences, competitions)

19 responses



10. Overall Learning Experience

19 responses



Latam
Principal

